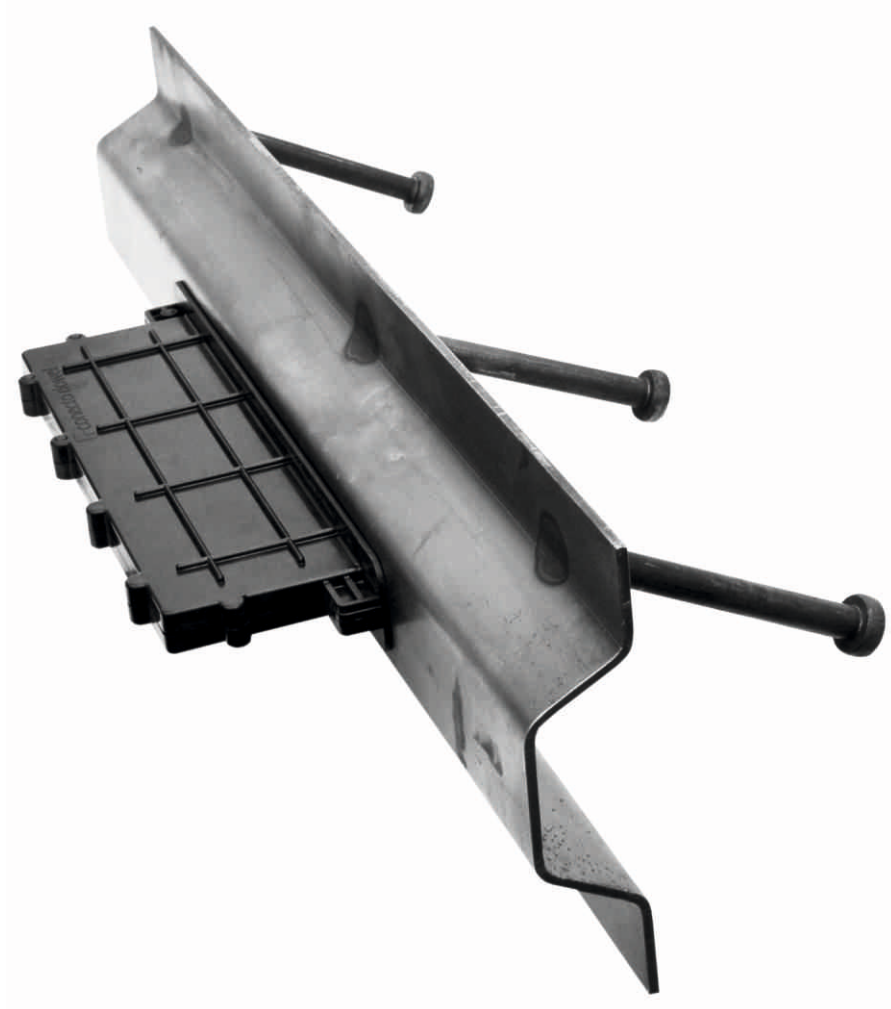
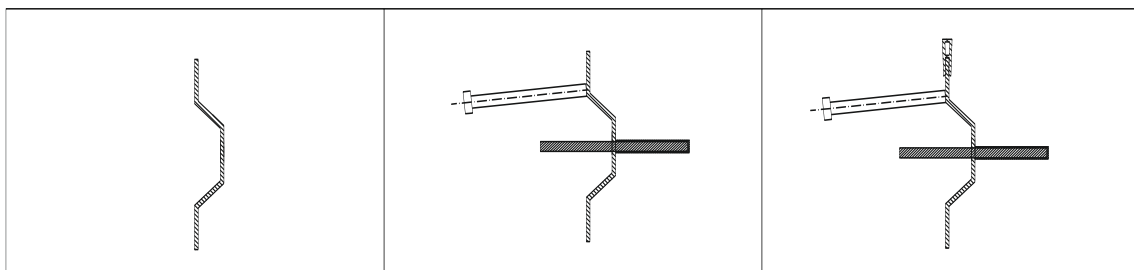


## TECHNICAL DATA SHEET



Conecto Omega 03NB is used as a day off work for the construction teams. The shape and dowel system prevent the least amount of vertical movement and guarantee optimal load transfers. Pulling rods guarantee solid anchorage in the concrete when shrinking occurs due to drying of the concrete, which also causes the actual widening to occur. The milled upper side ensures perfect smoothness of the 2 steel plates and lasting edge protection of the newly created floor.

- length 3 meters



### Places of application

industrial floors

logistics  
and distribution centers

industrial buildings

industrial storage  
facilities

airports